



vertical cable management



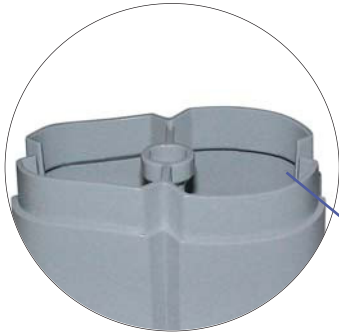
messenger

Compact and Elegant

Completely enclosed sections provide improved aesthetic over 'open segment' umbilicals

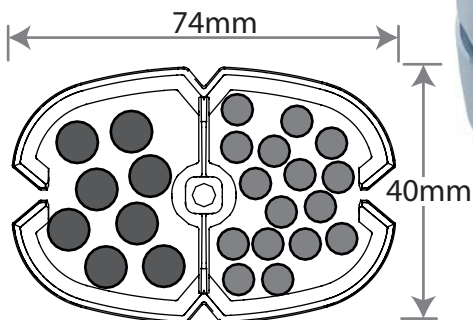
Cable protection

Central stainless steel cord guarantees protection of cables from undue pressure or tension



Segregated Sections

The unique design of the Messenger incorporates two fully segregated compartments ensuring that data and power cabling are kept separate.



Cross section – Two compartment
1000mm² per compartment

Ease of use

The interlocking jaws of each segment allow cables to be 'wiped-in' or removed easily at any time without the need to disassemble the umbilical



Quick release button

A unique quick disconnect latch mechanism, that cannot be accidentally operated.



Press in Cover Plugs

4 press in screw cover plugs (2 plus 2 spares) are provided on the rear of the umbilical closure cap to complete a clean and crisp finish in the floor

Messenger Grommet

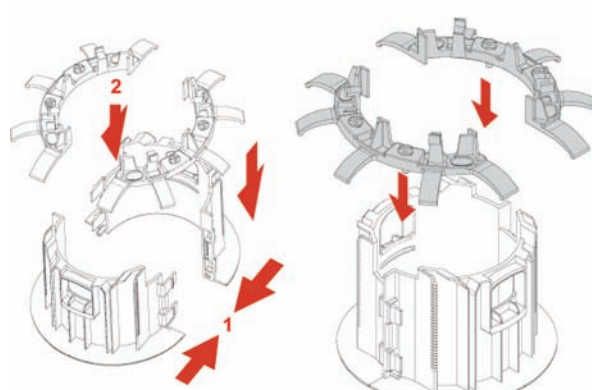
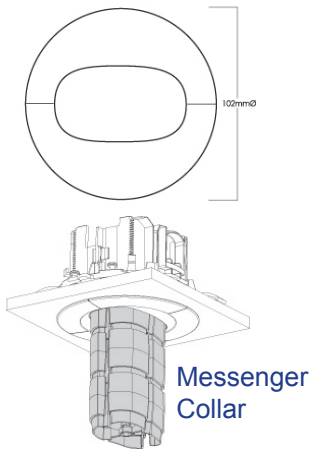
For installation (80mm hole) in raised floors or floorbox lids the grommet provides a simple means of cable routing/protection through the floor.

The unique locking bridge allows the instant locking/unlocking of umbilicals to/from the floor – ensuring maximum protection to cables from undue stress.

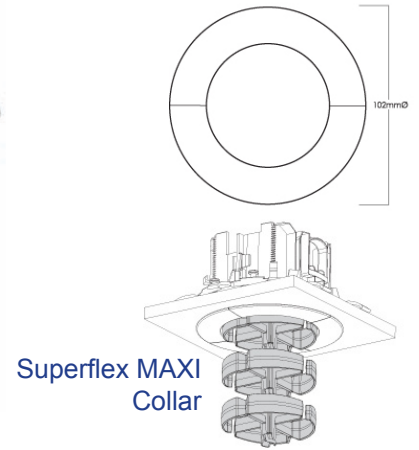
Quickly installed with 'swing out clamps' and a wide flange, to cover the cut edge of the carpet, the grommet provides a neat and secure base fixing with an overall outside dimension of 125mm diameter

UMBILICAL ACCESSORIES

Collar (White) – a smart through surface trim for ceiling, desk or 19" rack cabinet applications

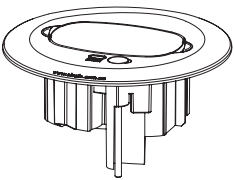


Collar installation procedure
(installed into a 102mm hole, from 2 – 40mm thick)

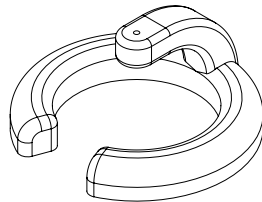


Terminations

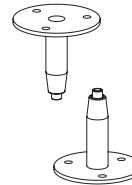
Floor Grommet (Grey)
Through surface fixing



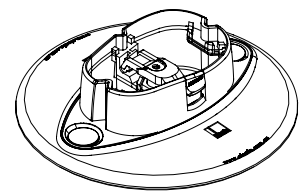
Weighted Base (Black)
Steel disc/Cast horseshoe



Gripper (CG2)
Screw down/up fixing

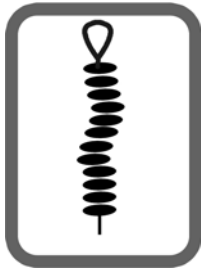


MPO (Grey)*
Surface mount fixing



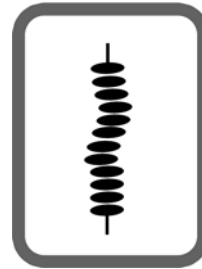
*messenger only

STANDARD UMBILICAL CONFIGURATIONS



loop to pin (C17)

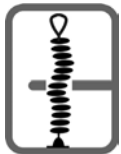
Ideally suited for ceiling hung umbilicals either down to desk, screen or floor.
The loop attaches to a hook/eyebolt allowing the wire to be pulled tight and/or length adjustable.



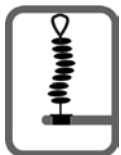
Pin to Pin (C21)

Predominantly for use between desk and floor – they are not length adjustable.
Stocked in 720mm lengths, however special lengths can be made to suit eg: height adjustable desking.

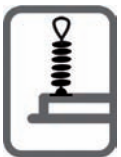
Applications using loop to pin configurations



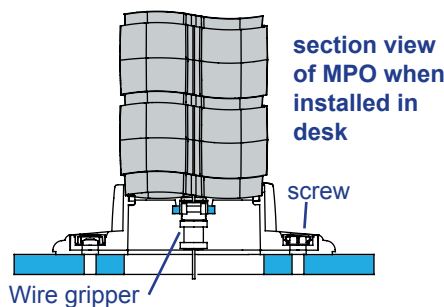
Gripper base (C15) – provides a fixed lower connection point to prevent movement of the umbilical and thereby ensure protection of the cables. Generally used in ceiling-floor or ceiling-screen applications.



Collar base – a neat through desk solution with integral gripper allows cables to drop straight into the underdesk cable management, see illustration below far right.

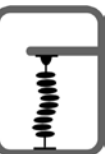


MPO base (Messenger only) – ideal as a seamless link into the top of workstation screens, completely enclosing the cables all the way into the screen, see right:

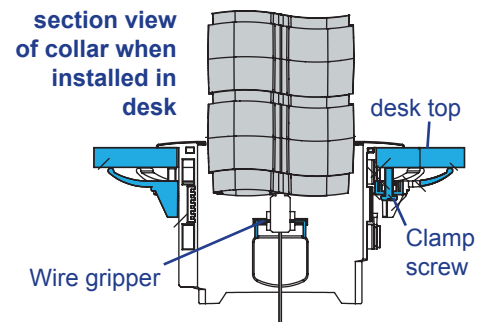


Applications using pin to pin configurations

Weighted base (C14) – simple solution to 'reduce' movement at the umbilical base.
NB: Weighted bases provide limited stress protection for the cables and in this respect are unsuitable for ceiling hung applications.



Grommet base (C13) – provides total protection of cables into the floor. Ideal for raised floor applications, but also for installation directly into floor box lids – considerably increasing the cable exit capacity of a floorbox.



superflex maxi



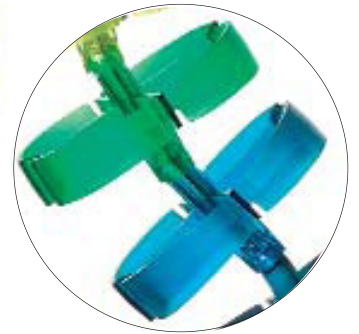
Each of the compact and stylishly shaped Superflex segments are partitioned into four separate sections.



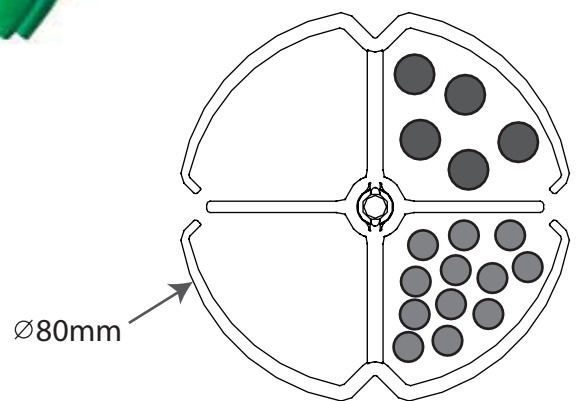
The stainless steel security wire running through the middle of the segments, ensures rigidity and safety, should undue pressure or tension be applied to the system. Braking strain: 150 kg



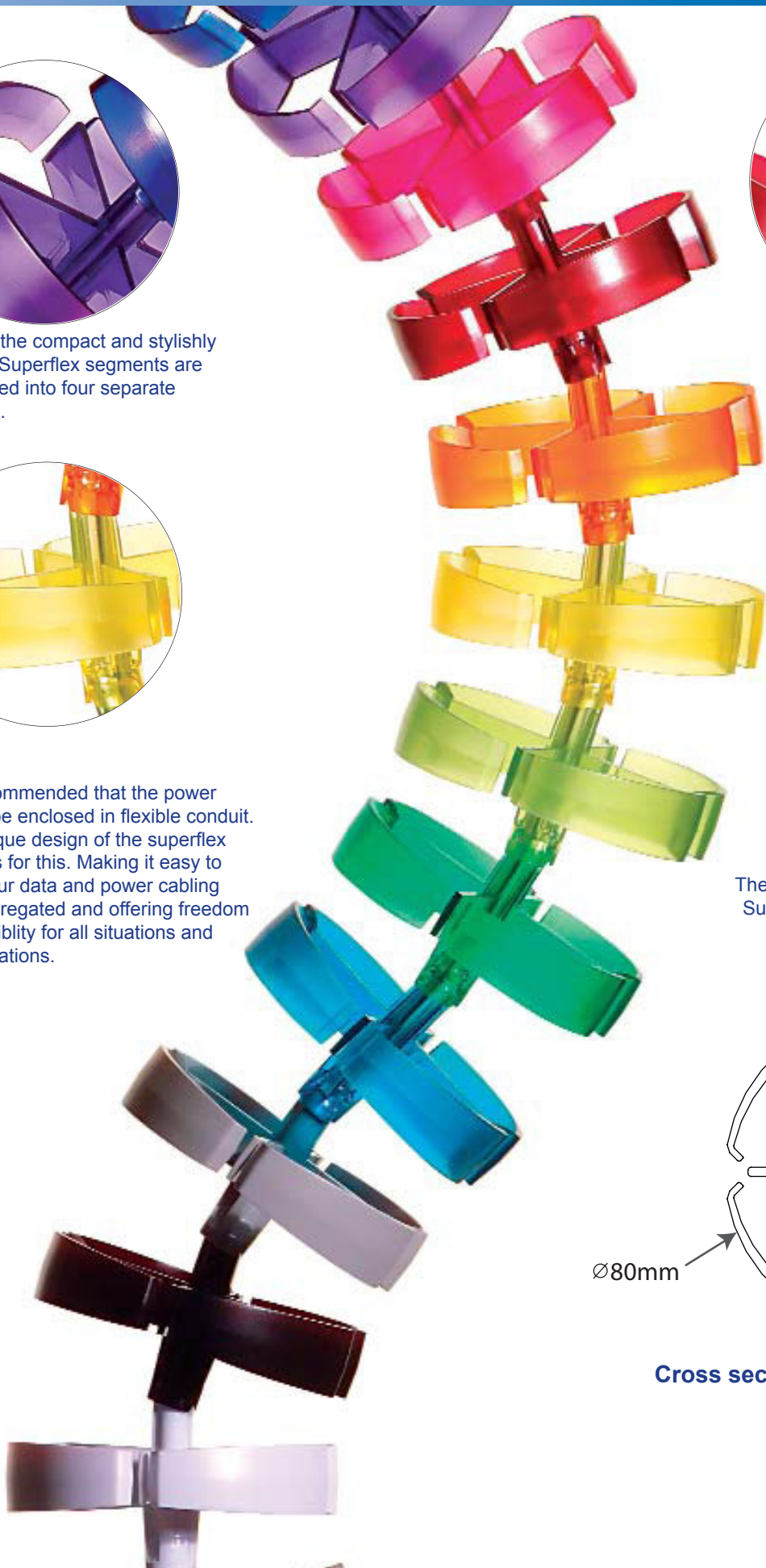
It is recommended that the power cables be enclosed in flexible conduit. The unique design of the superflex provides for this. Making it easy to keep your data and power cabling fully segregated and offering freedom and flexibility for all situations and configurations.



The unique design of the interlocking Superflex segments provide smooth and flexible solutions preventing twisting and jamming



Cross section - Four compartment
900mm² per compartment



Messenger Grommet Setup & Installation



Step 1
Cut an 80mm diameter hole in the raised floor and carpet tile, lower the complete floor grommet into the cavity.



Step 2
Install carpet and secure the floor grommet into the floor, using a screwdriver to activate the inbuilt clamping mechanism.



Step 3
Install the power and data services up through the floor grommet into the messenger as required.



Step 4
Secure Messenger into floor grommet and attach.



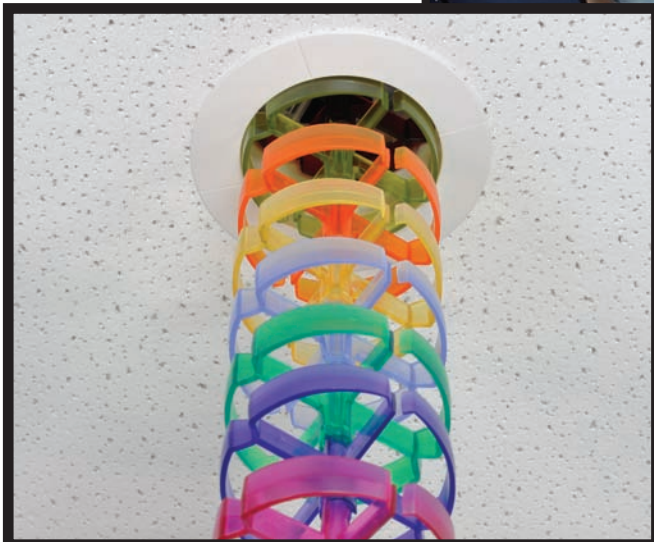
Step 5
To remove the Umbilical, place a screw driver in the slot provided. Press and hold down firmly and then remove umbilical.



Step 6
When the umbilical is removed from the floor grommet a snap-in cover is provided to close the opening, leaving the grommet flush and unobtrusive to traffic areas.

Umbilicals in Practice

As Part of a complete cable management and soft wiring package our umbilical solutions ensure safe, flexible yet stylish options for the provision of power and data at the workstation



Messenger Pedestal Outlet (MPO)

The MPO is a surface mounted grommet that works directly with the Messenger umbilical system.

Although the MPO can be mounted to any surface, it is particularly suited to the top of workstation screens where it can provide a stylish link completely hiding cables from view. Where the MPO is fitted into carpeted/fabric surfaces a spacer can be provided to cover the cut edges of the material/carpet.



QUICK LOCK

Special locking system enables the Messenger to be locked into the MPO quickly & efficiently

QUICK RELEASE BUTTON

Highlighted in yellow for easy visual reference and with one easy push, the messenger is released from the quick lock gripper.

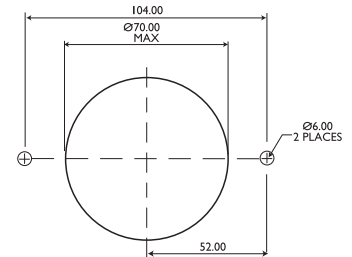
CODE: 328020

Standard colour is grey. Other colours available upon request & may have a minimum order quantity

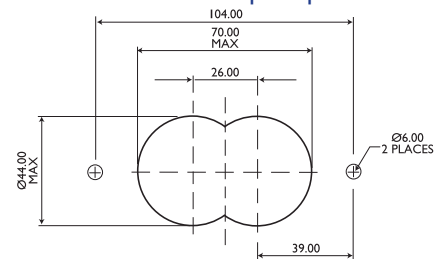


MPO cutout details

cutout with carpet spacer



cutout without carpet spacer



Head Office (UK)

1 Calder Point
Monckton Road industrial Estate
Wakefield, West Yorkshire, WF2 7AL
Tel: +44 (0) 1924 367255 Fax: +44 (0) 1924 290652
Email sales@office-electrics.co.uk www.office-electrics.com

London Showroom:

1a Briset Street
London, EC1M 5NR
Tel + 44 (0) 207 2539738

Australia (Elsafe)

Unit 1, 9 Rodborough Road,
Frenchs Forest NSW 2086, Australia
Tel: +61 (0) 2 9454 7500 Fax: +61 (0) 2 9454 7505
Email: sales@elsafe.com.au www.elsafe.com.au

Middle East

Tel: + 971 (0) 501983150
Email: info.middle-east@office-electrics.co.uk

Asia

Tel: + 65 (0) 90753879
Email: info.asia@office-electrics.co.uk

Elsafe Australia Contact details:

NSW Sales:

Tel: +61 2 9454 7515
sales@elsafe.com.au

QLD Sales:

Tel: +61 7 3399 7099
qld@elsafe.com.au

VIC Sales:

Tel: +61 3 9840 1321
vic@elsafe.com.au

Website:

www.elsafe.com.au

Version: 2011.10.07.

elsafe

1 Calder Point, Monckton Road Industrial Estate,
Wakefield, West Yorkshire, WF2 7AL
Tel: +44 (0) 1924 367255 Fax: +44 (0) 1924 290652
Email: sales@office-electrics.co.uk www.office-electrics.com

Elsafe, Unit 1, 9 Rodborough Road,
Frenchs Forest NSW 2086, Australia
Tel: +61 (0) 2 9454 7500 Fax: +61 2 9454 7505
Email: sales@elsafe.com.au www.elsafe.com.au